

Camera Settings Guideline

- Shutter Priority
- Shutter Speed: min 1000/sec
- ISO: 400 or higher



Photography Tips

- Side views preferred
- Multi-frame shooting
- Photograph both sides and all body parts when possible

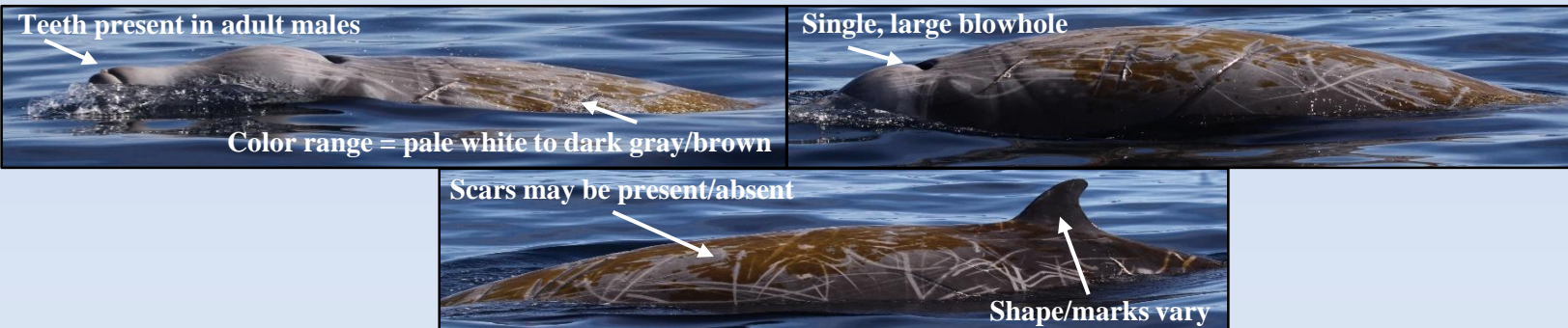
PHOTOS WANTED FOR RESEARCH

Calling all researchers, naturalists, and citizen scientists. We need your help documenting these species for essential research!

Below are examples of IDEAL photos. Please be sure to record date, time, latitude, longitude, or general location.

Please contact: OUTREACH@MARECOTEL.ORG

Cuvier's Beaked Whales



Fin Whales *Endangered*



- No dorsal fin/smooth back and tailstock
- Dark brown/black
- DeepV-shaped blow

North Pacific Right Whales • *Critically Endangered*

Callosities: unique pattern of white or yellow calluses on head

Real-time sightings are important! Please call/text: **678-358-1388**

Please include your contact information and make sure to note time, latitude, longitude, direction of travel.



Marine Mammal Viewing Guidelines and Regulations:

Do not approach within 100 yards.

Do not place your vessel in the path of oncoming whales causing them to surface within 100 yards of your vessel.

Do not disrupt the normal behavior or prior activity of a whale.

Operate your vessel at a slow, safe speed.

Maintain a 1,500 foot altitude when viewing from the air.